



EZ Door Machine Ordering Worksheet

5-10-23

EZ Door Machine Ordering Worksheet

A feature that makes our EZ Door machine simple and efficient to operate are the four cutters with inserts on a single four-position, button-operated spindle.

Included in the price of each NEW* EZ Door machine are the aforementioned cutters with inserts (see next page re: “bodies” and “backers”) plus one free cathedral or eyebrow template used for creating arches.

The purpose of this worksheet is to guide your selection of the insert shapes and arch template(s) in five easy steps.

*The **free** inserts and template are available only with the purchase of a NEW EZ Door machine.

Five Easy Steps

Steps 1 through 3 involve selecting your four free cutter with insert shapes.

Step 4 guides you in selecting additional optional inserts (and bodies and backers if required) for an additional cost. This step is not required.

Step 5 allows you to select your one free template for cutting arches. Each arch template is stepped four times thus allowing you to create a range of panel widths for the profile height that you choose. Additional templates are available for an incremental fee.



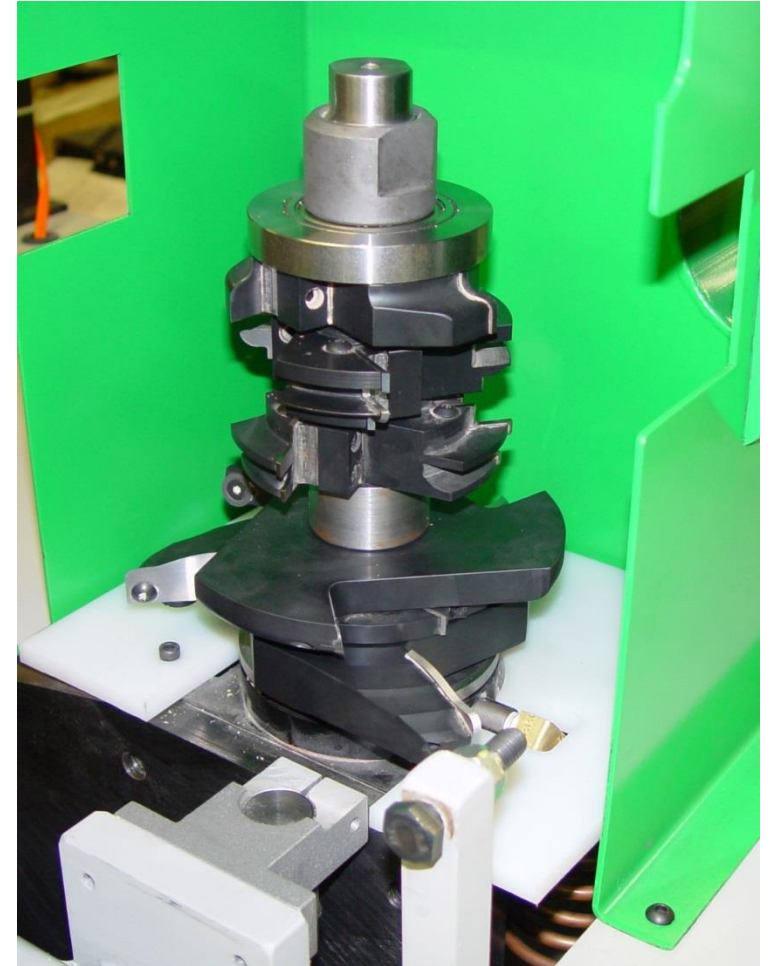
Spindle with cutter stack – not to size.

EZ Door Machine Ordering - Terminology

One cutter stack (see image to right) is included in the price of the machine.

- Inserts are fastened to “bodies” unique to each insert.
- There are three inserts (of one shape) in each body. Thus, 9 inserts.
- The outside edge inserts requires “(3) backers” in addition to the body and an 3 inserts.
- In combination, the inserts/bodies/backers (the cutter stack) fit on a four-position, button-operated spindle.

IF YOU ORDER MORE INSERT SHAPES THAN THE FOUR THAT COME FREE WITH THE MACHINE (OR NEED REPLACEMENT PARTS), THEN THE INFORMATION ON THIS PAGE WILL BE MOST RELEVANT.



Spindle with cutter stack – not to size.

On the (4) cutters and (1) template that come with the machine, the below choices are what Fletcher Machine offers.

If you choose not to order the options below, you can choose to order your own and have them shipped to Fletcher Machine to complete the machine.

We use High Definition Tooling 828-397-2467

EZ Door without cutters: 30,950.00

EZ Door without a template: 32,050.00

EZ Door without cutters and a template: 30,550.00

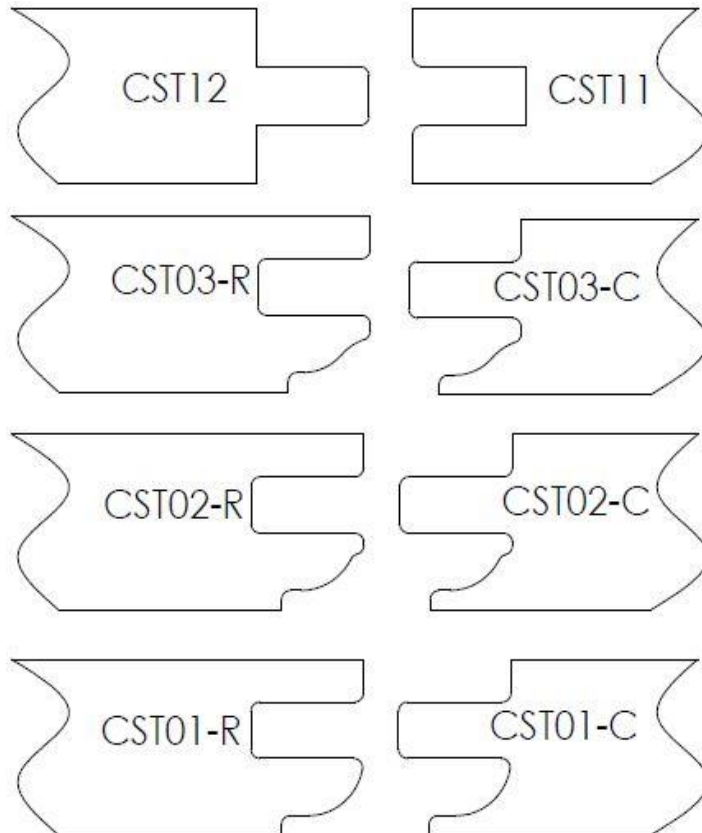
EZ Door Machine Ordering Worksheet - continued

Step 1: Rail and Cope Cutter Pairs – free insert #1 and free insert #2
(Choose one pair- check box)

CST12 and CST11 are Shaker Inserts and are installed on Shaker bodies.

Remaining inserts are installed on Cope & Rail bodies. Cope & Rail inserts will not fit Shaker bodies.

- CST12 and CST11, or
- CST03-R and CST03-C, or
- CST02-R and CST02-C, or
- CST01-R and CST01-C

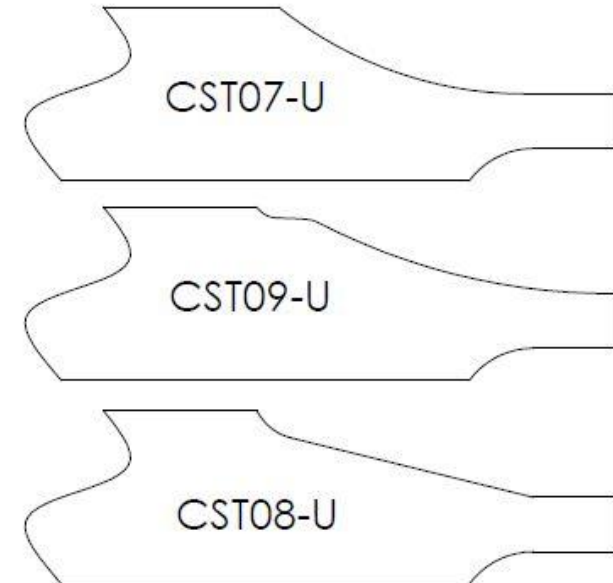
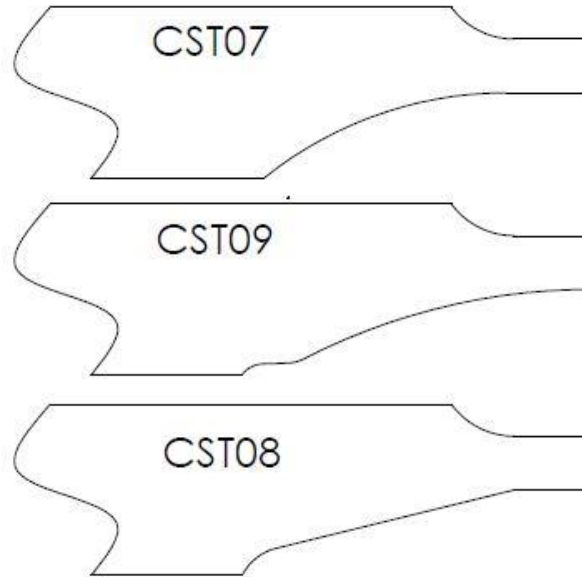


Approximate to size. Scale is correct.

EZ Door Machine Ordering Worksheet - continued

Step 2: Panel Cutters – free insert #3 (Choose one)

- CST07 (face down), or
- CST09 (face down), or
- CST08 (face down), or
- CST07-U, or
- CST09-U, or
- CST08-U



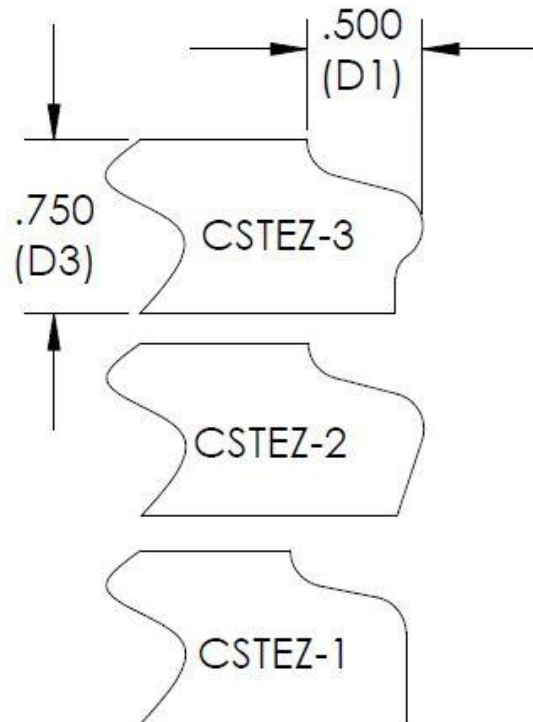
CST07, CST09 and CST08 are the more typical “face down” raised panel shapes. While the same profile, the “U” inserts are “face up” and not as commonly used.

Approximate to size. Scale is correct.

EZ Door Machine Ordering Worksheet - continued

Step 3: Outside Edge Cutter – free insert #4 (Choose one)

- CSTEZ-3, or
- CSTEZ-2, or
- CSTEZ-1



Approximately to size. Scale is correct.

EZ Door Machine Ordering Worksheet - continued

Step 4: Additional cutter inserts are available at an additional cost.

IMPORTANT: SKIP TO STEP 5 IF YOU DO NOT REQUIRE ADDITIONAL INSERTS, OR OTHER CUTTER STACK PARTS, AT THIS TIME.

Ordering options for additional stack parts for a machine:

Option 1 (Recommended): Additional Stack(s) at an additional cost

Repeat steps 1 – 3 from the prior pages. This will allow you to create an additional stack of inserts, bodies and backers. By having a complete stack, you can quickly and easily swap one stack for another. We will match the appropriate bodies and backers with the insert shapes you select.

EZ Door Machine Ordering Worksheet - continued

Option 2: À La Carte (you may choose this method in ordering additional stack parts for a new machine or for a used machine that requires replacement parts).

Please note the following:

- Each body requires the same three inserts to complete it.
- Outside edge shapes also require backers.

EZ Door Machine Ordering Worksheet - continued

One cutter height adjustment block is included in the purchase price of each EZ Door machine. The block will be factory-calibrated to the appropriate cutter heights prior to customer delivery. Additional blocks/stacks can be calibrated by the purchaser at their facility unless ordered when a new machine is ordered (those would also be factory-calibrated).

As indicated on the previous page, this item is also included in the price of each additional full cutter stack purchased.

This will allow the machine user to have a cutter height adjustment block dedicated to a specific cutter stack, thus eliminating or minimizing the need for “on the fly” cutter height adjustments.



Cutter height adjustment block

EZ Door Machine Ordering Worksheet - continued

Step 5: Templates (Choose from the 12 options)



1 1/2" Profile Ranges – Eyebrow Template



Template #1	Template #2	Template #3	Template #4
Panel Width	Panel Width	Panel Width	Panel Width
6" to 6 1/2"	8" to 8 3/4"	11" to 12"	15" to 16"
6 1/2" to 7"	8 3/4" to 9 1/2"	12" to 13"	16" to 17"
7" to 7 1/2"	9 1/2" to 10 1/4"	13" to 14"	17" to 18 1/2"
7 1/2" to 8"	10 1/4" to 11"	14" to 15"	18 1/2" to 20"



Please note: Choose any one FREE template from the 12 options. Additional templates cost \$750 each.

EZ Door Machine Ordering Worksheet - continued

Step 5: Continued



7/8" Profile Ranges – Eyebrow Template

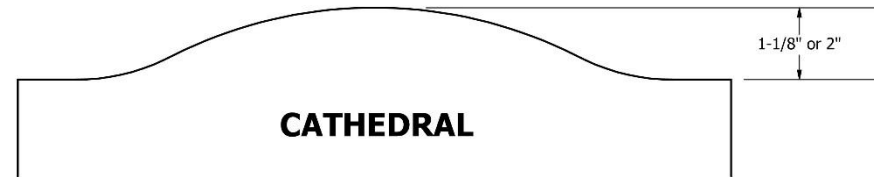


Template #5	Template #6	Template #7
Panel Width	Panel Width	Panel Width
6 ½" to 7 ½"	10 ½" to 11 ½"	14 ½" to 16"
7 ½" to 8 ½"	11 ½" to 12 ½"	16" to 17 ½"
8 ½" to 9 ½"	12 ½" to 13 ½"	17 ½" to 19"
9 ½" to 10 ½"	13 ½" to 14 ½"	19" to 20 ½"



EZ Door Machine Ordering Worksheet - continued

Step 5: Continued



1 1/8" Profile Ranges – Cathedral Template

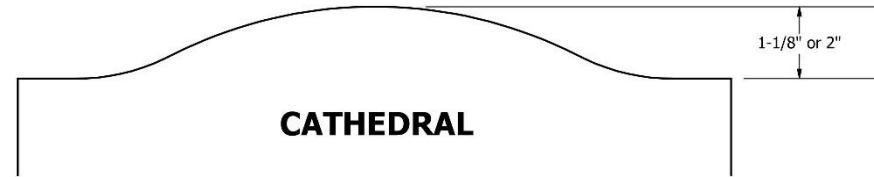


Template #8	Template #9	Template #10
Panel Width	Panel Width	Panel Width
6 ½" to 8"	12 ½" to 14"	18 ½" to 20"
8" to 9 ½"	14" to 15 ½"	20" to 21 ½"
9 ½" to 11"	15 ½" to 17"	21 ½" to 23"
11" to 12 ½"	17" to 18 ½"	23" to 24 ½"



EZ Door Machine Ordering Worksheet - continued

Step 5: Continued



2" Profile Ranges – Cathedral Template



Template #11	Template #12
Panel Width	Panel Width
8" to 9 ½"	14" to 15 ½"
9 ½" to 11"	15 ½" to 17"
11" to 12 ½"	17" to 18 ½"
12 ½" to 14"	18 ½" to 20"



EZ Door Machine Contact Directory

To get a quote on an EZ Door machine	To order an EZ Door machine	To find the status of an EZ Door machine order	To order replacement parts for an EZ Door machine.
<p>Bobby Miller bmiller@fletcher-machine.com 336-362-3342</p>	<p>Bobby Miller bmiller@fletcher-machine.com 336-362-3342</p>	<p>Bobby Miller bmiller@fletcher-machine.com 336-362-3342</p>	<p>Teresa Fletcher tfletcher@fletcher-machine.com 800-438-1054</p>
<p>Lisa Michael lmichael@fletcher-machine.com 800-438-1054</p>	<p>Lisa Michael lmichael@fletcher-machine.com 800-438-1054</p>	<p>Lisa Michael lmichael@fletcher-machine.com 800-438-1054</p>	<p>Wendy McClamrock wmcclamrock@fletcher-machine.com 800-438-1054</p>
<p>4305 E. US HWY 64 Lexington, NC 27292</p>	<p>4305 E. US HWY 64 Lexington, NC 27292</p>	<p>4305 E. US HWY 64 Lexington, NC 27292</p>	<p>4305 E. US HWY 64 Lexington, NC 27292</p>