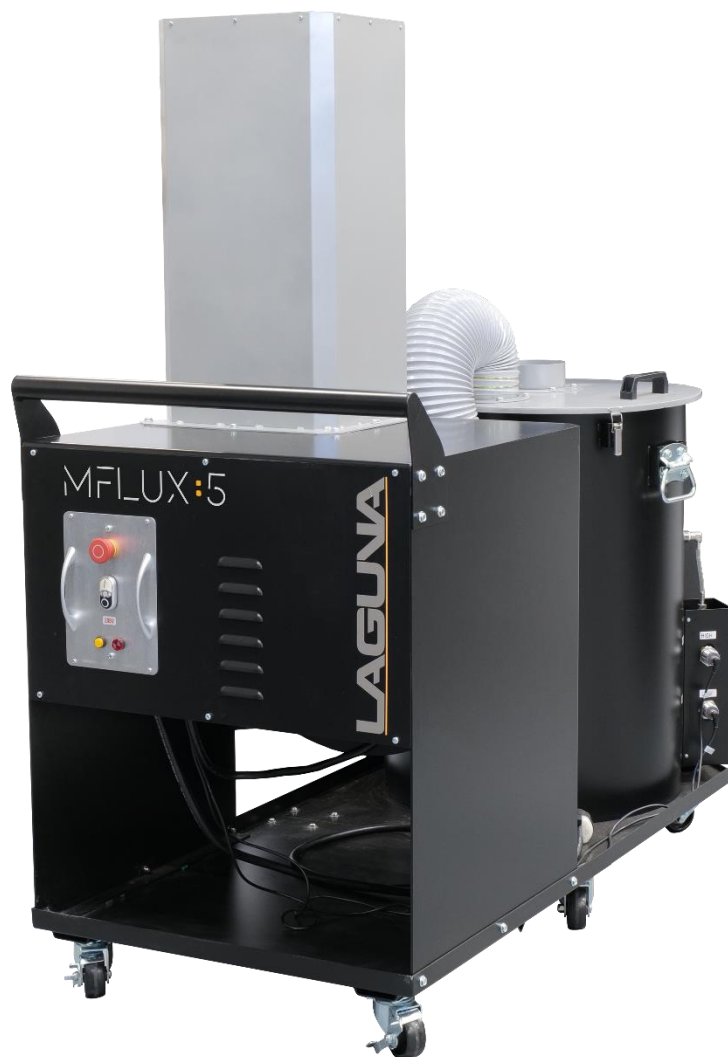


M Flux 5 Wet Metal Dust Collector Owner's Manual



SKU/MODEL: MCDCWDC-5

LAGUNA

Laguna Tools
744 Refuge Way
Grand Prairie, TX 75050
lagunatools.com

M Flux 5 Wet Metal Dust Collector Owner's Manual

Scope of This Manual

This manual outlines the basic procedures for unpacking, installing, and operating the M Flux 5 dust collector.

For detailed instructions and assembly video, please go to:

<https://lagunatools.com/product/metal-machinery/dust-collectors/mflux5-wet-metal-dust-collector>



Customer Service

For technical support, please contact Laguna Tools:

Call Customer Service at 1-800-332-4094 or email customer_service@lagunatools.com. Please note the machine type in the subject line.

Copyright © 2023

Laguna Tools, Inc.

ALL RIGHTS RESERVED

This document contains material protected under International and Federal Copyright Laws and Treaties. Any unauthorized reprint or use of this material is prohibited. No part of this document may be reproduced or transmitted in any form or by any means, electronic or mechanical, including photocopying, recording, or by any information storage and retrieval system without express written permission from the author/publisher. LAGUNA® and the LAGUNA Logo® are the registered trademarks of Laguna Tools, Inc.

DISCLAIMER

Laguna Tools is not responsible for errors or omissions. Specifications subject to change. Machines may be shown with optional accessories.

Revision 01 (01/02/2025)

Table of Contents

1.0 General Information and Safety 6

1.1 Overview 6

1.2 Safety Signs and Call-Outs 6

1.3 Safety Warnings 7

1.4 Additional Safety Information 8

1.5 Proposition 65 Warning of Harmful Exposure 10

1.6 Intended Use 10

2.0 Specifications and Dimensions 11

2.1 Specification Table 11

3.0 Receiving the Machine 12

4.0 Components & Hardware 14

5.0 Machine Placement 16

5.1 Placement 16

5.2 Dust Collection 16

5.3 Electrical 16

5.4 Lighting 16

6.0 Unloading & Unpacking the Machine 17

7.0 Grounding Instructions 19

7.1 For Grounded, Cord-Connected Appliances 19

M Flux 5 Wet Metal Dust Collector Owner's Manual

7.2	For a Permanently Connected Appliance	19
8.0	Setup and Assembly	20
9.0	Operation Panel	27
10.0	How to Fill the Bin with Water	28
10.1	High Water Level Error	29
10.2	Lower Water Level Error	30
11.0	Exploded Diagram & Parts List	31
12.0	Maintenance.....	35
13.0	Troubleshooting	36
14.0	Warranties	38

1.0 General Information and Safety

1.1 Overview

SAVE THIS MANUAL. Keep this manual for the safety warnings, precautions, assembly, operating, inspection, and maintenance procedures. Read this Owner's Manual in its entirety prior to assembly or operation.

Read and understand all warnings and operation instructions before using any tool or equipment. Always follow basic safety precautions to reduce the risk of personal injury. Improper operation, maintenance, or modification of tools or equipment could result in serious injury or property damage. Laguna Tools equipment is designed for specific and limited applications. This product should not be modified nor used for any application other than its intended use.

PERSONAL SAFETY IS THE RESPONSIBILITY OF THE OPERATOR.

1.2 Safety Signs and Call-Outs

 **DANGER**

An imminently hazardous situation which, if not avoided, will result in death or serious injury.

 **WARNING**

A potentially hazardous situation which, if not avoided, may result in death or serious injury.

 **CAUTION**

A potentially hazardous situation which, if not avoided, could result in minor or moderate injury.

 **NOTE**

A helpful tip from Laguna Tools staff.

1.3 Safety Warnings

1. Failure to comply with safety instructions may lead to personal injury and/or damage to the equipment. Do not operate the machine unless familiar with all safety instructions, warnings, and signs.
2. Do not operate the machine with the electrical cabinet door open—High Voltage Supply Inside.
3. The machine must be properly electrically grounded. The power supply must be connected with a permanently fixed electrical wire.
4. Keep children and non-operators away from the machine.
5. Operators must be familiar with the installation, operation, and service of the machine. Only proper operation can ensure the safe and smooth running of the machine.

 **WARNING**

Automated machinery involves moving parts which pose a potential hazard to personnel. Be aware of machine movement at all times.

 **WARNING**

Only allow qualified service personnel to perform electrical installation or repair work, and always disconnect power before accessing or exposing electrical equipment to reduce risks.

1.4 Additional Safety Information

WARNING: Basic precautions should always be followed when using your dust collector. To reduce the risk of injury, electrical shock or fire, comply with the safety rules listed below:

1. **READ** and understand the instruction manual before operating the dust collector.
2. **DO NOT** leave the dust collector plugged into the electrical outlet. Unplug dust collector from outlet when not in use and before servicing, changing bags, unclogging and cleaning.
3. **ALWAYS** turn the power switch "OFF" before unplugging the dust collector.
4. **WARNING: TO REDUCE THE RISK OF ELECTRICAL SHOCK** do not use outdoors or on wet surfaces.
5. **FOLLOW** all electrical and safety codes, including the National Electric Code (NEC), the Occupational Safety and Health Regulations (OSHA), and any local codes. All electrical connections and wiring should be made by qualified personnel only.
6. **DO NOT** use the dust collector to pick up flammable or combustible liquids, such as gasoline. **NEVER** use the dust collector near any flammable or combustible liquids.
7. **USE** the dust collector to pick up metal materials only. **DO NOT** use the dust collector to pick up wood shavings, dust, or parts.
8. **NEVER** use the dust collector to dissipate fumes or smoke. **NEVER** pick up anything that is burning or smoking, such as cigarettes, matches or hot ashes.
9. **USE** only as described in this manual.
10. **DO NOT** pull the dust collector by the power cord. **NEVER** allow the power cord to come in contact with sharp edges, hot surfaces, oil or grease.
11. **DO NOT** unplug the dust collector by pulling on the power cord. **ALWAYS** grasp the plug, not the cord.
12. **DO NOT** handle the plug or dust collector with wet hands.
13. **REPLACE** a damaged cord immediately. **DO NOT** use a damaged cord or plug. If the dust collector is not operating properly, or has been damaged, left outdoors or has been in contact with water, return it to an Authorized Service Center for service.
14. **DO NOT** use the dust collector as a toy. **DO NOT** use near or around children.

M Flux 5 Wet Metal Dust Collector Owner's Manual

15. DO NOT insert fingers or foreign objects into the dust intake ports. Keep hair, loose clothing, fingers, and all body parts away from openings and moving parts of the dust collector.
16. DO NOT use the dust collector without a filter bag and dust collection bag in place and properly secured.
17. DO NOT operate the dust collector with unused dust intake ports uncapped. ALWAYS cover exposed dust intake ports.
18. PERIODICALLY INSPECT dust and filter bags for any cuts, rips or tears. NEVER operate the dust collector with a damaged bag or vacuum hose.
19. The dust collector is designed for home use or light commercial duty ONLY!
20. CONNECT dust collector to a properly grounded outlet only. See Grounding Instructions

1.5 Proposition 65 Warning of Harmful Exposure

Some dust created by power sanding, sawing, grinding, drilling, and other construction activities contains chemicals known to the state of California to cause cancer, birth defects, or other reproductive harm. Some examples of these chemicals are:

- Lead from lead-based paint.
- Crystalline silica from bricks, cement, and other masonry products.
- Arsenic and chromium from chemically treated lumber.



Fire Warning

Keep the machine clean by following the supplied maintenance schedule and always have a fire extinguisher ready to extinguish a fire. Take extreme caution when operating the machine.

Never leave the machine running unattended.

The tools sold by Laguna Tools are safe when used properly, as described by the American National Safety Institute, the UL Standards of safe tool use, and the IEC standards of safe tool use. Laguna Tools is in no way responsible for injury or death that occurs while using this product.

The risk of exposure varies depending on frequency of use. To reduce exposure to these chemicals, work in a well-ventilated area and work with approved safety equipment, such as face or dust masks that are specifically designed to filter out microscopic particles.

1.6 Intended Use

The machine is designed to extract dust that is produced from metal working applications. Do not use this machine for other than its intended use.

M Flux 5 Wet Metal Dust Collector Owner's Manual

2.0 Specifications and Dimensions

2.1 Specification Table

Table 2-1: Specification Table

Specifications	
POWER REQUIREMENTS	208V / 60 HZ / 1 Phase
AMPERAGE	34 AMP
FOOTPRINT (L x W x H)	60" x 28"x 66" (1520mm x 710mm x 1670mm)
MOTOR SPEED	3450 RPM
MOTOR	5 HP
SUCTION CAPACITY	3103 CFM
STATIC PRESSURE	16.2 Inch H ₂ O
IMPELLER SIZE	13"
INLET SIZE	5"
OUTLET SIZE	6"
SWITCH	Magnetic Switch
NET WEIGHT	493.5 lbs (223.3 kgs)
GROSS WEIGHT	541.5 lbs (245.5 kgs)
CUBIC FEET	40.3'
SHIPPING DIMENSIONS (L x W x H)	57" x 32.5" x 38" (1450mm x 820mm x 960mm)

3.0 Receiving the Machine

Following delivery and before the driver and riggers have left, inspect the packing, invoice, and shipping documents. Next, ensure there is no visible damage to the packaging or the machine. All damage must be noted on the delivery documents and signed by the receiver and the delivery driver. Contact Laguna Tools Customer Service as soon as possible in case of damage. It is advisable to photograph and document any shipping damage. The original packaging is required to return damaged equipment to Laguna Tools.

Most large machinery will be delivered on a tractor trailer 48 to 53 feet long. Please notify a Sales Representative with any Delivery Restrictions.

4.0 Components & Hardware

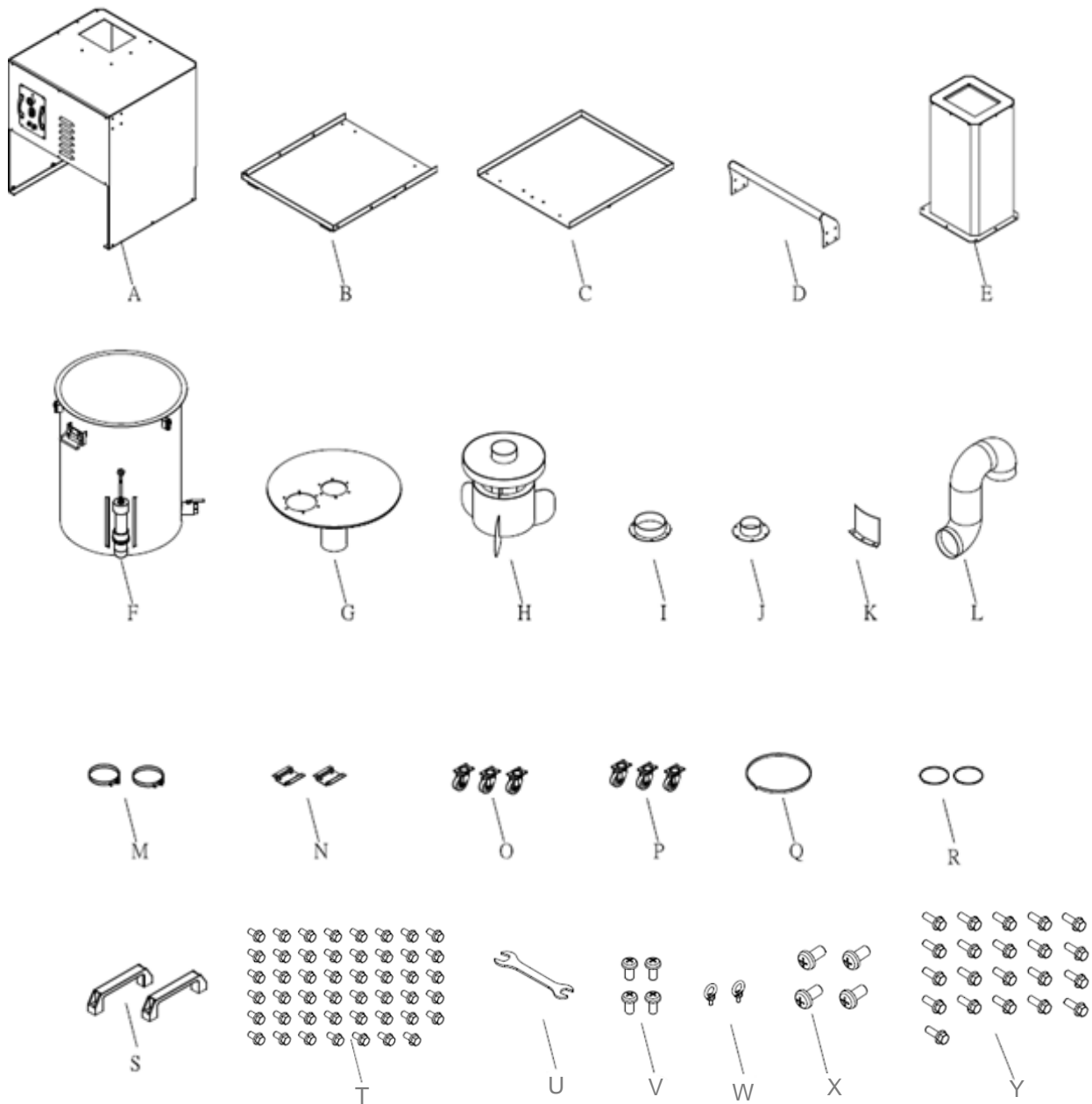


Figure 4-1: Components & Hardware

M Flux 5 Wet Metal Dust Collector Owner's Manual

LETTER	DESCRIPTION	QUANTITY
A	Main Housing	1
B	Left Base	1
C	Right Base	1
D	Handle	1
E	Muffler	1
F	Collecting Drum	1
G	Drum Lid	1
H	Separator	1
I	Outlet Adapter	1
J	Inlet Adapter	1
K	Plate	1
L	Hose	1
M	Hose Clamp	2
N	Wheel Bracket	2
O	Swivel Caster with Brake	3
P	Swivel Caster	3
Q	Foam	1
R	Foam	1
S	Drum Handle	1
T	Flange Bolts	47
V	Phillips Head Screw	4
W	Hanger	2
U	Open Wrench	1
X	Flat Head Screw	4
Y	Flange Bolts	21

5.0 Machine Placement

When unpacking the machine, separate all enclosed items from the packing materials and inspect each for damage. Save the packaging materials until all issues concerning missing or damaged items have been resolved.

5.1 Placement

Select the area where the machine will be operated. The physical environment where the machine is located is important to safe assembly and operation. Before removing the machine from its packaging consider the weight load, electrical installation requirements, lighting, dust collection, and space allocation available for the machine and accompanying materials.

Guidelines for properly placing the machine follow:

1. There should be sufficient area around the machine to facilitate easy access to the workpiece, perform maintenance, and provide safe egress in the event of an emergency.
2. Select a solid level floor rated to hold the weight of the machine and workpieces under both static and dynamic loads. Laguna Tools recommends concrete flooring. Consult a licensed and experienced professional if in doubt.
3. Locate the machine close to a power source and dust collection.
4. Allow an area for the storage of workpiece materials, finished products, and tools.
5. Leave ample space around the machine for the operator to handle both the equipment and the materials being cut.
6. Leave enough space around the machine to open or remove doors/covers as required by the maintenance described in the Owner's Manual.
7. **DO NOT** place or operate the machine in a highly magnetic area.

5.2 Dust Collection

Allow enough space for proper dust collection from the machine. For optimal operation, ensure that the machine is in a dry environment, free from excessive moisture, extreme weather conditions, hazardous chemicals, or airborne abrasives

5.3 Electrical

The machine requires permanent, direct power installed by a qualified electrician familiar with industrial best practices. Ensure that all power cords are protected from traffic, moisture, chemicals, or other hazards. For safety, always have a qualified electrician assess grounding and any further electrical needs.

5.4 Lighting

Ensure that the lighting your machine is placed under is sufficient to safely perform regular operation and maintenance. Any glares, shadows, or strobe lighting which may distract or prevent the operator from safely operating the machinery should be removed from the working area.

6.0 Unloading & Unpacking the Machine

NOTE

All shipping related claims for loss or damaged goods must be made to Laguna Tools within 24 hours of delivery.

Contact Laguna Tools customer service department to make claims for any damaged items/parts.

The original packaging is required to return damaged goods within the warranty period.

The machine should be delivered on a trailer by one or a combination of these methods:

1. In a crate
2. In a box
3. Heat shrunk in plastic
4. Sitting on a pallet

BEFORE unpacking your new machine, inspect the packaging, invoice, and the shipping documents supplied by the driver. When unpacking the machine, verify there are no signs of damage to the parts or machine you have received.

See the components section to cross reference the parts you should receive.

WARNING

Unload the machine with care. DO NOT pinch, crush, or damage any components that are on/around the machine.

WARNING

This machine is heavy. Seek assistance from an experienced professional if you have any doubt about the following unboxing or set up procedures.

DO NOT attempt any procedure that you feel is unsafe or you believe you do not have the physical capability of achieving.

M Flux 5 Wet Metal Dust Collector Owner's Manual

CAUTION

When determining location, verify there is sufficient room around the machine.. If you cannot fully open all the doors around the machine, it cannot be installed or serviced in the future if necessary.

Tools needed:

- Crowbar or prybar
- Drill with Phillips head bit
- Tip snips

BEFORE moving the machine to the desired location, verify that there is sufficient room around the dust collector to facilitate easy access to the workpiece, perform maintenance, and provide a safe exit in the event of an emergency.

1. Move the machine to a desired location.
2. Use tin snips to cut and remove any straps.
3. Use a drill with Phillips head bit to remove any screws that are securing the machine to the pallet/crate.
4. If necessary, use the prybar to remove any surrounding wood.
5. Remove the pallet/crate.
6. Ensure that all parts/components are present and in good condition.

7.0 Grounding Instructions

The appliance must be grounded, if it should malfunction or breakdown, grounding provides a path of least resistance for electric current to reduce the risk of electric shock. This appliance is equipped with a cord having equipment-ground conductor and grounding plug. The plug must be inserted into an appropriate outlet that is properly installed and grounded in accordance with all local codes and ordinances.

WARNING

Improper connection of the equipment-grounding conductor can result in a risk of electric shock. Check with a qualified electrician or service person if you are in doubt as to whether the outlet is properly grounded. Do not modify the plug provided with the appliance – if it will not fit the outlet; have a proper outlet installed by a qualified electrician.

7.1 For Grounded, Cord-Connected Appliances

This appliance is for use on a circuit having a normal rating more than 120 volt and is factory-equipped with a specific electric cord and plug to permit connection to a proper electric circuit. Make sure that the appliance is connected to an outlet having the same configuration as the plug. No adaptor should be used with this appliance. If the appliance must be reconnected for use on a different type of electric circuit, qualified service personnel should make the reconnection.

7.2 For a Permanently Connected Appliance

This appliance must be connected to a grounded metal, permanent wiring system; or an equipment-grounding conductor must be run with the circuit conductors and connected to the equipment grounding terminal or lead on the appliance.

8.0 Setup and Assembly

WARNING

Do not connect to a power supply until set-up is complete. Do not perform any of the following steps, installations, or adjustments with the machine connected to a power source unless directed to do so.

Tools & items needed:

- Knife or cutting tool
 - Tin snips
 - Phillips head screwdriver
1. After unloading the machine, make sure that all straps, plastic wrap, and surrounding wood are removed.

CAUTION

Be cautious of any cords that a running to and from the machine.

DO NOT rip or fray any cords when unloading the machine.

2. Remove any other components from the machine and set them to the side.

M Flux 5 Wet Metal Dust Collector Owner's Manual

NOTE

All shipping related claims for loss or damaged goods must be made to Laguna Tools within 24 hours of delivery.

Contact Laguna Tools customer service department to make claims for any damaged items/parts.

The original packaging is required to return damaged goods within the warranty period.

WARNING

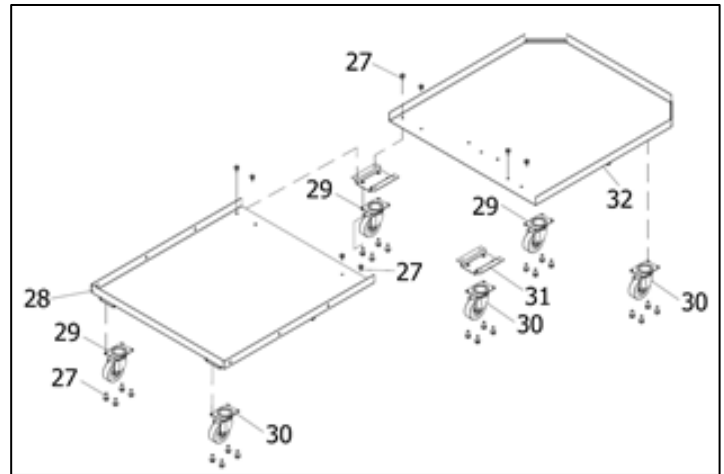
Do not operate this unit until hose or pipe is installed onto the dust inlet port.

WARNING

This machine is for metalworking machinery use only, and prohibited from other purpose.

M Flux 5 Wet Metal Dust Collector Owner's Manual

1. Assemble the Wheel Bracket (NO. 31) onto the Left base (NO. 28) and Right Base (NO. 32) with Flange Bolts (NO. 27). Tighten them with the supplied wrench.



2. Assemble the Swivel Caster with Brake (NO. 29) and Swivel Caster (NO. 30) onto the Left Base (NO. 28) and Right Base (NO. 32) with Flange Bolts (NO. 27). Tighten them with the supplied wrench. See Figure 8-1.

Figure 8-1: Setup Installation

3. Secure the Hanger (NO. 56) onto the Main Housing (NO. 26) using the wire rope to lift the Main Housing.
4. Then place the Housing (NO.26) on the Left Base (NO. 28) and secure it with Flange Bolts. (NO. 21) Tighten the bolts with the supplied wrench.
5. Assemble the Handle (NO. 34) onto the Main Housing (NO. 26) and tighten with Flange Bolts (NO. 21) Tighten with the supplied wrench .See Figure 8-2

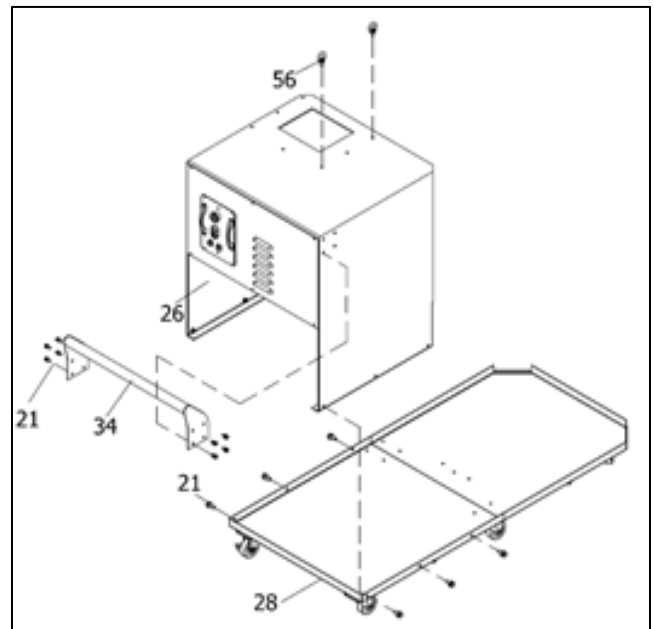


Figure 8-2: Setup Installation Cont'd

M Flux 5 Wet Metal Dust Collector Owner's Manual

6. Remove the Hanger (NO. 56) from the Main Housing. See Figure 8-3.

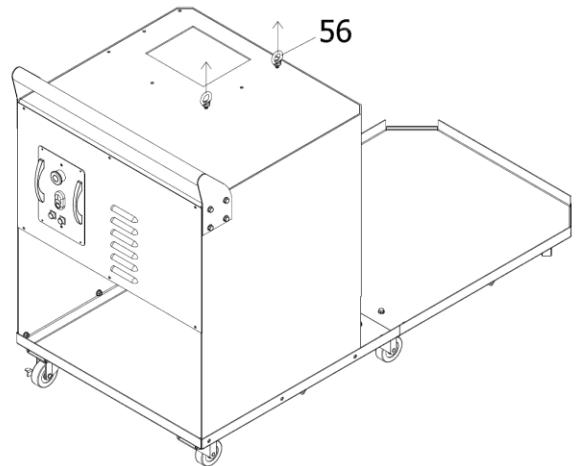


Figure 8-3: Setup Installation Cont'd

7. Paste the Foam (NO. 35) on the Muffler (NO. 36).
8. Assemble the Muffler (NO. 36) onto the Main Housing (NO. 26) and tighten with Flange Bolts (NO. 21). See Figure 8-4. Tighten with the supplied wrench.

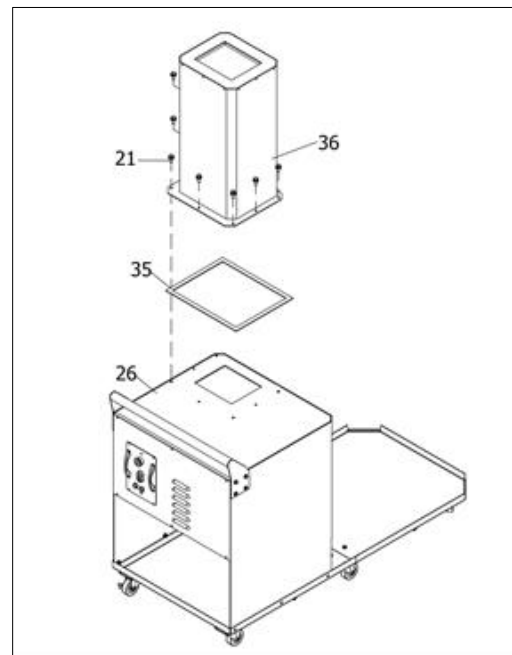


Figure 8-4: Setup Installation Cont'd

M Flux 5 Wet Metal Dust Collector Owner's Manual

9. Place the Separator (NO. 49) into the Collecting Drum (NO. 51), and place the Drum Lid (NO. 48) onto the Collecting Drum (NO. 51).
10. Stick the Foam (NO.45) on the Inlet Adapter (NO.43) and Outlet Adapter (NO.44). Use the Open Wrench (NO. 55) to tighten the Inlet Adapter (NO. 43) and Outlet Adapter (NO. 44) and Flange Bolts (NO. 27) onto the Drum Lid (NO. 48).
11. Assemble the Drum Handle (NO. 47) and use a flat head screwdriver to tighten the flat head screws (NO. 46) onto the Drum Lid (NO. 48). See Figure 8-5

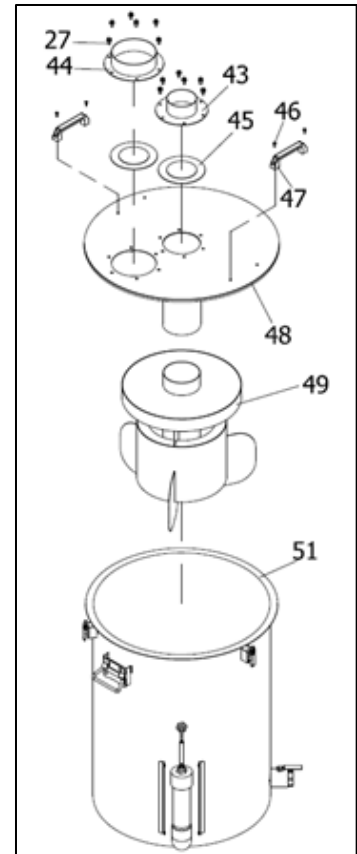


Figure 8-5: Setup Installation Cont'd

M Flux 5 Wet Metal Dust Collector Owner's Manual

12. Assemble the Plate (NO. 33) onto the Right Base (NO. 32) and use the supplied wrench to tighten with Flange Bolts (NO. 27).
13. Place the Collecting Drum (NO. 51) onto the Right Base (NO. 32).
14. Place the Hose (NO. 41) on the Main Housing (NO. 26) with the Hose Clamp (NO. 42).
15. Place the Hose (NO. 41) onto the Outlet Adapter (NO. 44) with Hose Clamp (NO. 42). See Figure 8-6

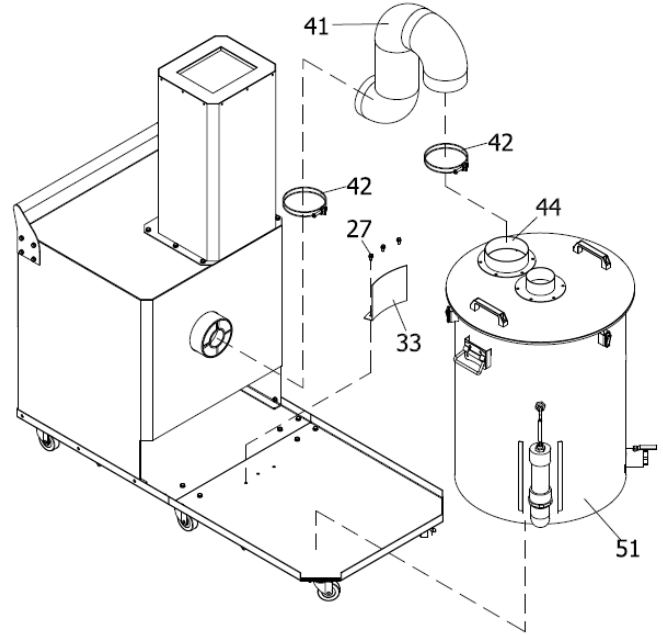


Figure 8-6: Setup Installation Cont'd

M Flux 5 Wet Metal Dust Collector Owner's Manual

16. Place the Indicator Cover (NO. 52) onto the Collecting Drum (NO. 51) and use a Phillips head screwdriver to tighten the Phillips head screws (NO. 54). See Figure 8-7.

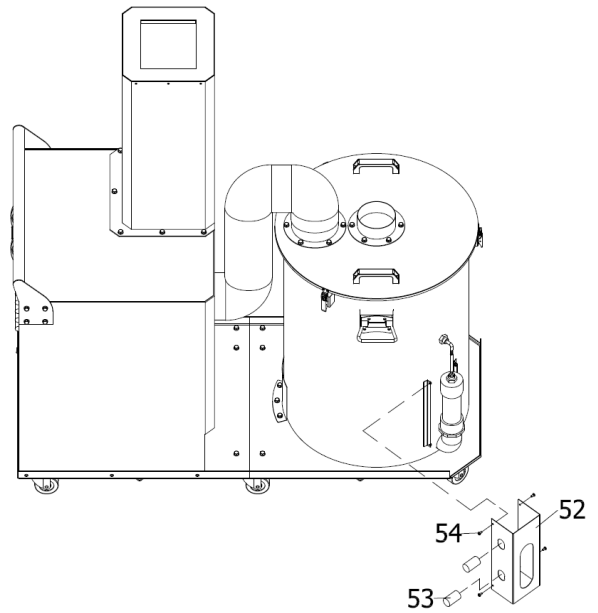


Figure 8-7: Setup Installation Cont'd

17. Assembly is complete.

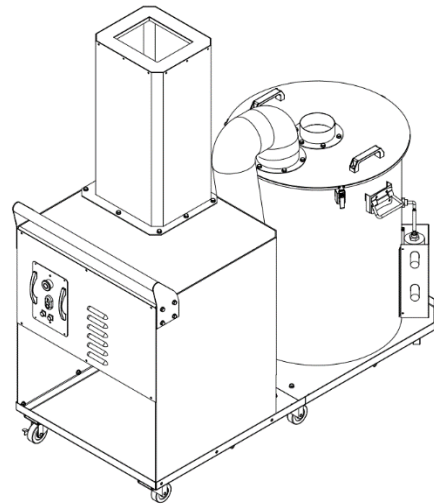
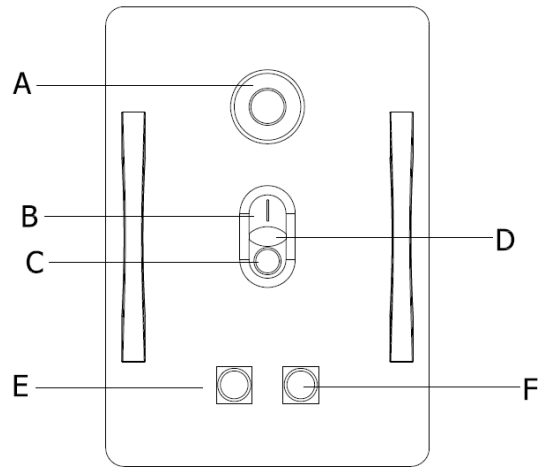


Figure 8-8: Setup Complete

9.0 Operation Panel



A: Emergency Stop Button

B: Start Button

C: Stop Button

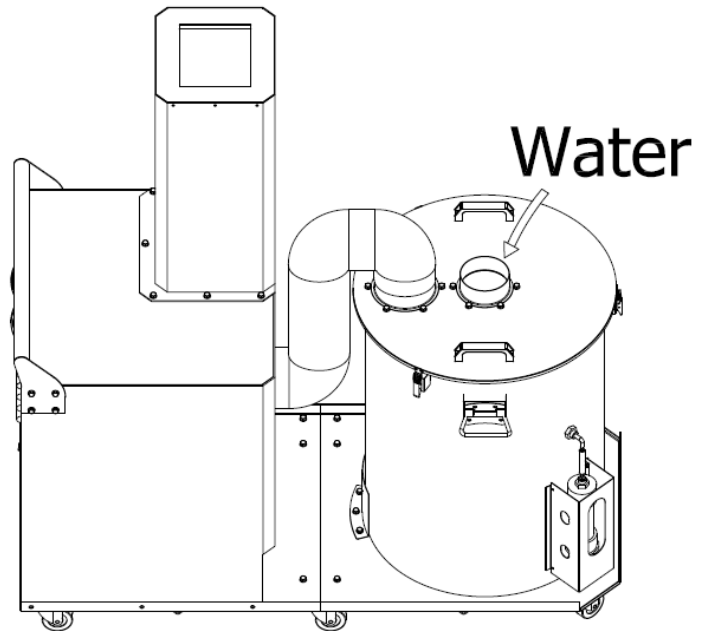
D: Machine Operation

E: Machine Error

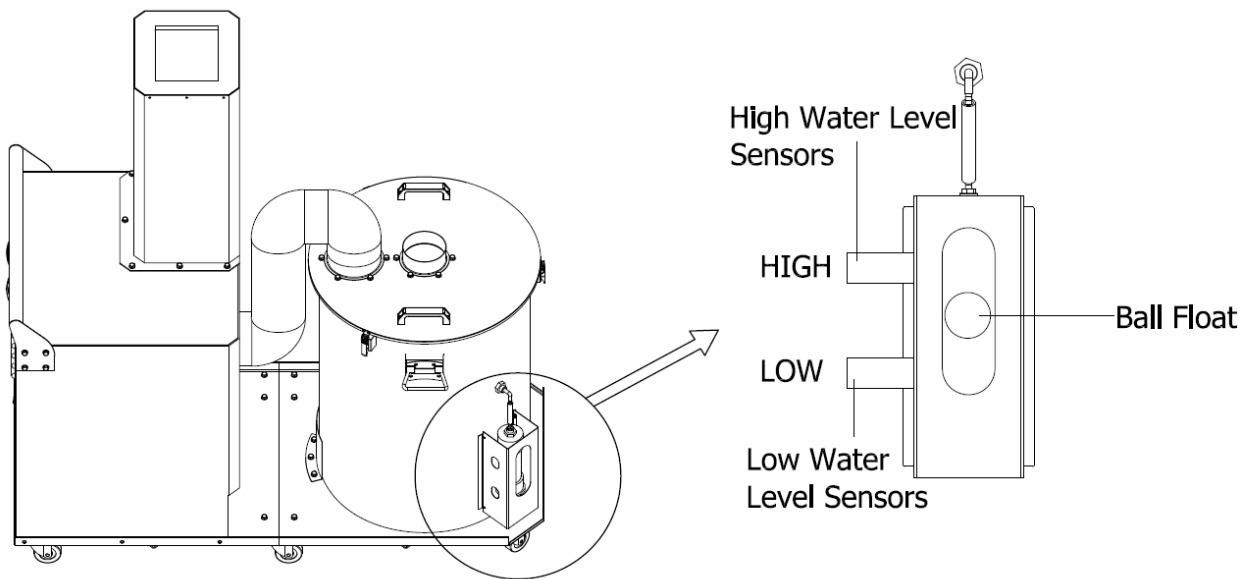
F: Water Level Error

10.0 How to Fill the Bin with Water

1. Fill Water into the bin.



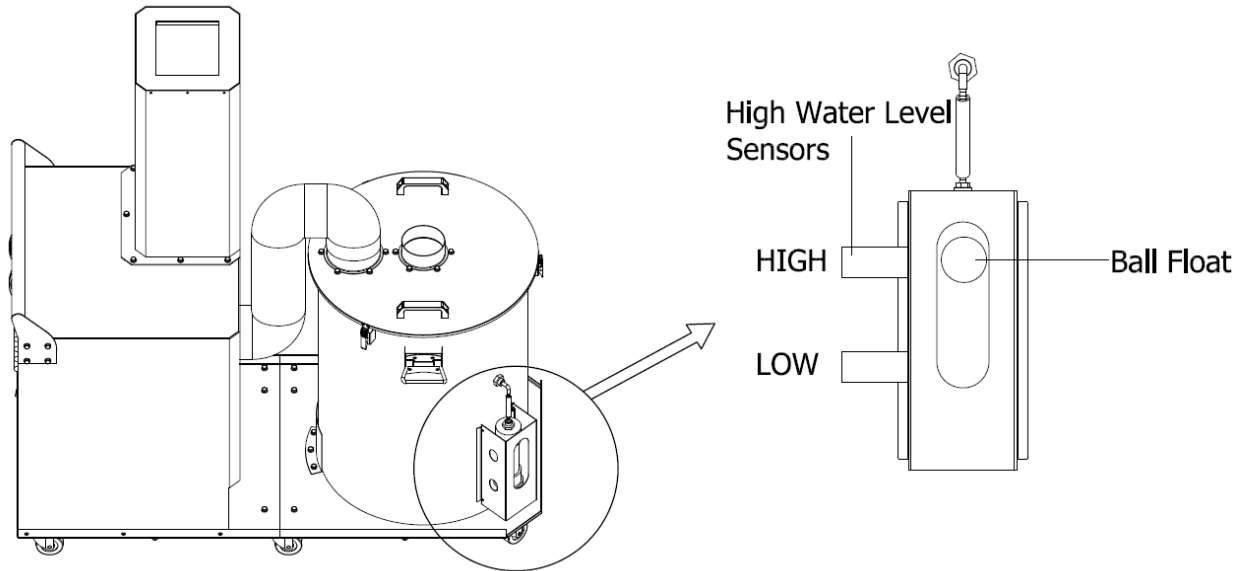
2. The ball float rises between the high-water level sensor and low-water level sensor, then please press the start button to running machine.

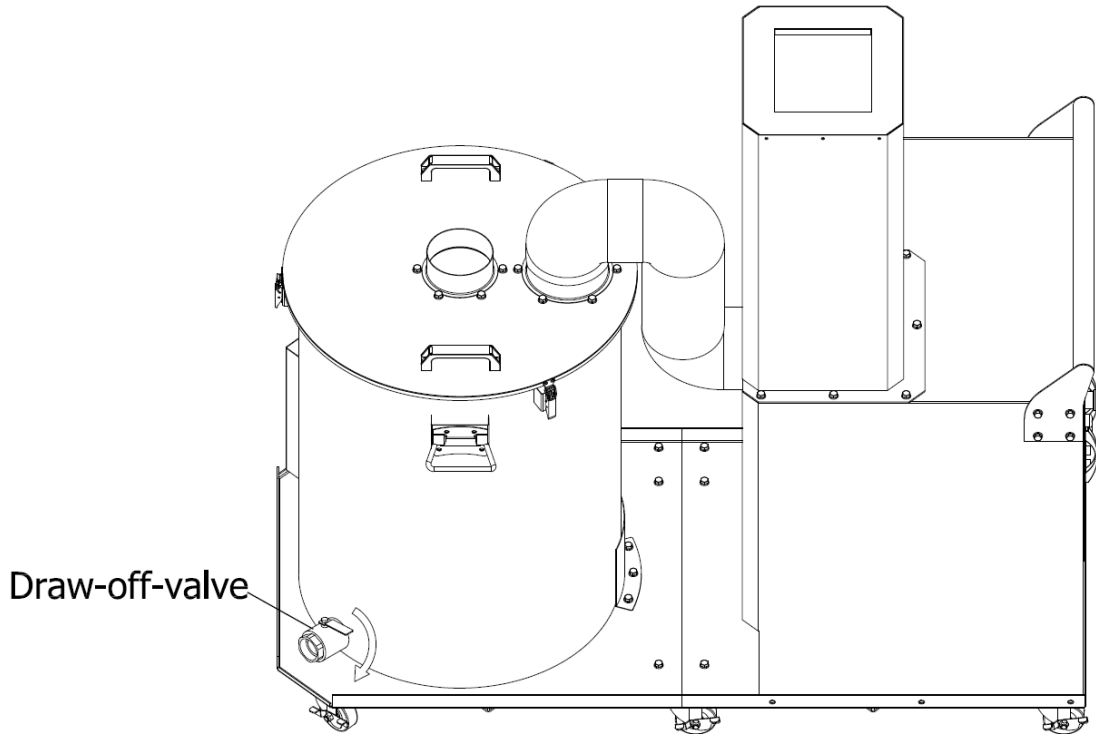


10.1 High Water Level Error

After the machine has been used for a period, the water level in the bin will gradually rise. When the High-Water Level Sensor senses the ball float, the machine will emit a warning sound.

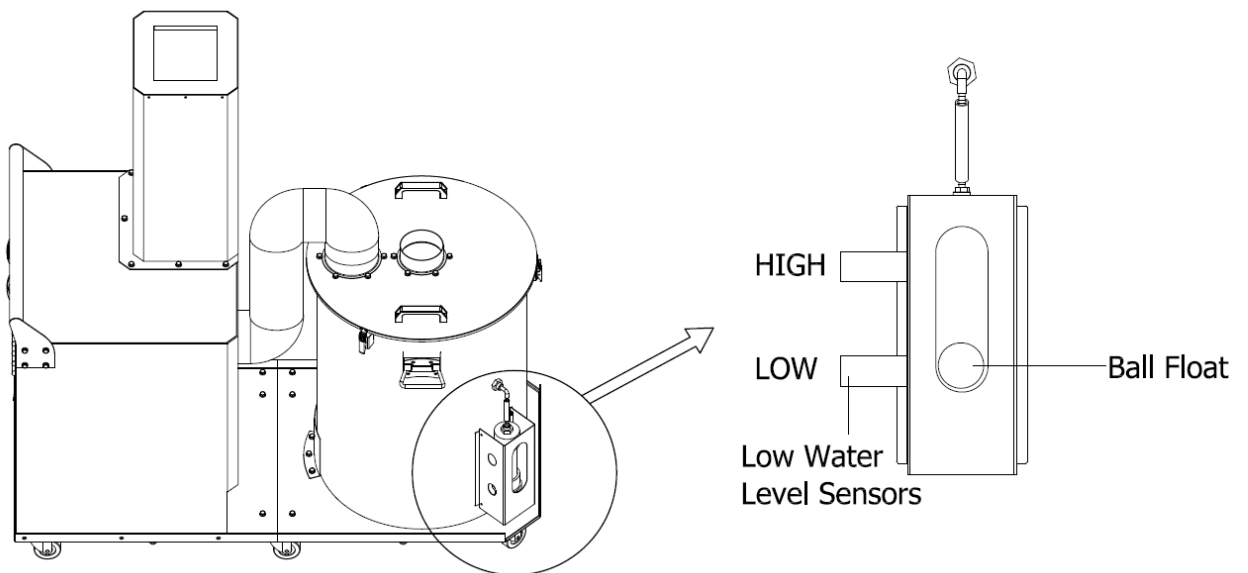
At this moment, please press the stop button, then open the draw-off valve from the bin, and drain the water and metal dust from the bin. And then, please close the draw-off valve. Finally, please inject clean water into the bin, and press the start button to turn on the machine.





10.2 Lower Water Level Error

When the water level in the bin is too low, and the Low Water Level Sensors senses the ball float. Machine will emit a warning sound, and machine stops running. At this moment, please press the stop button, and inject clean water into the bin and let the ball float rise to the high-water level sensor between the low water level sensor, press the start switch to turn on the machine.



11.0 Exploded Diagram & Parts List

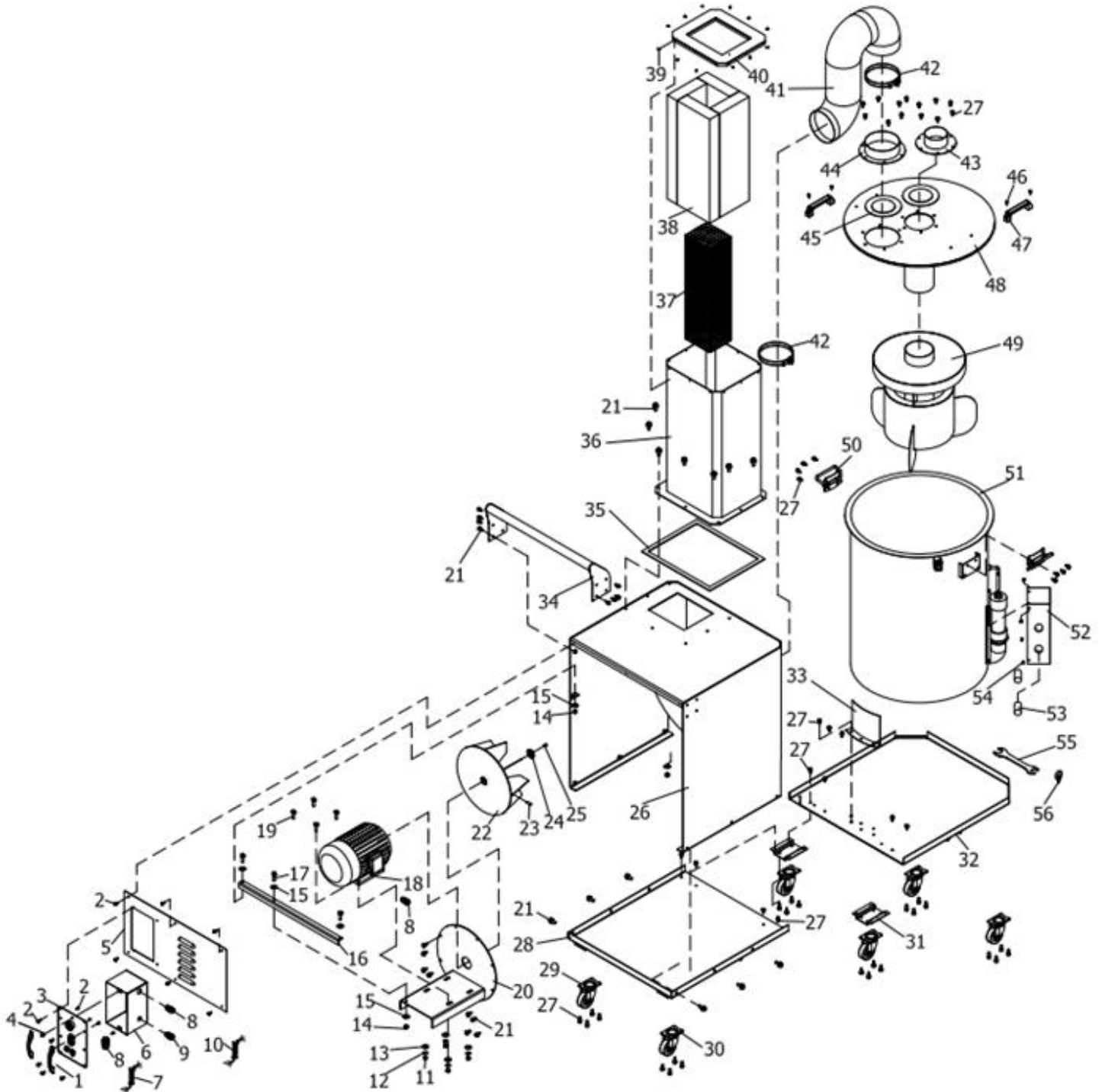


Table 11-1: Parts List

M Flux 5 Wet Metal Dust Collector Owner's Manual

REF.	PART NO.	DESCRIPTION	SPECIFICATION	QUANTITY
1	UB205FD-1	Panel Handle		2
2	UB205FD-2	Phillips Head Screw	M4x6	14
3	UB205FD-3	Switch Plate		1
4	UB205FD-4	Phillips Head Screw	1/4"x1/2	2
5	UB205FD-5	Rear Cover		1
6	UB205FD-6	Control Box Assembly		1
7	UB205FD-7	Power Cord		1
8	UB205FD-8	Bushing	MP-25	3
9	UB205FD-9	Bushing	MP-20	1
10	UB205FD-10	Motor Cord		1
11	UB205FD-11	Nut	3/8"	4
12	UB205FD-12	Lock Washer	3/8"	4
13	UB205FD-13	Washer	3/8"	4
14	UB205FD-14	Hex Nut	M6	3
15	UB205FD-15	Washer	M6	6
16	UB205FD-16	Motor Plate Bar		1
17	UB205FD-17	Hex. Head Screw	M6x20	3
18	UB205FD-18	Motor	5HP	1
19	UB205FD-19	Flange Bolts	3/8"x1-1/4"	4
20	UB205FD-20	Motor Plate		1

M Flux 5 Wet Metal Dust Collector Owner's Manual

21	UB205FD-21	Flange Bolts	5/16"x3/4"	29
22	UB205FD-22	Impeller		1
23	UB205FD-23	Set Screw	3/8"x3/4"	1
24	UB205FD-24	Impeller Washer		1
25	UB205FD-25	Cap Screw	M6x20	1
26	UB205FD-26	Main Housing		1
27	UB205FD-27	Flange Bolts	5/16"x1/2"	55
28	UB205FD-28	Left Base		1
29	UB205FD-29	Swivel Caster with Brake		3
30	UB205FD-30	Swivel Caster		3
31	UB205FD-31	Wheel Bracket		2
32	UB205FD-32	Right Base		1
33	UB205FD-33	Plate		1
34	UB205FD-34	Handle		1
35	UB205FD-35	Foam	3x20x1590	1
36	UB205FD-36	Muffler		1
37	UB205FD-37	Iron Net		1
38	UB205FD-38	Muffler Foam		1
39	UB205FD-39	Hex. Soc. Set Screw	M5x8	12
40	UB205FD-40	Muffler Cover		1
41	UB205FD-41	Hose	6"x1.2M	1

M Flux 5 Wet Metal Dust Collector Owner's Manual

42	UB205FD-42	Hose Clamp	6-3/8"	2
43	UB205FD-43	Inlet Adapter		1
44	UB205FD-44	Outlet Adapter		1
45	UB205FD-45	Foam	1x30x650	2
46	UB205FD-46	Flat Head Screw	1/4"x1/2"	4
47	UB205FD-47	Drum Handle		2
48	UB205FD-48	Drum Lid		1
49	UB205FD-49	Separator		1
50	UB205FD-50	Handle		2
51	UB205FD-51	Collecting Drum		1
52	UB205FD-52	Indicator Cover		1
53	UB205FD-53	Water Level Indicator		2
54	UB205FD-54	Phillips Head Screw	3/16"x3/8"	4
55	UB205FD-55	Open Wrench	10-12	1
56	UB205FD-56	Hanger	5/16"	2

12.0 Maintenance

The SmartShop Auto Loader requires the operator to perform basic regular maintenance to ensure the normal operation of the equipment, reduce possible failures, and prolong the service life of the equipment. Follow this maintenance table to ensure proper use of the machine.

Table 12-1: Maintenance Table

Daily	Weekly	Monthly	Every three Months	Every six Months	Yearly
Inspect the machine for damage and loose or worn parts					
Verify the electrical connections are fitted tightly and correctly.					
Verify that all electrical connections are not damaged or worn.					
Clean surface dust					

13.0 Troubleshooting

Table 13-1: Troubleshooting Table

Symptom	Possible Cause	Possible Solution
Machine does not start or a breaker trips.	Power supply switched OFF or is faulty.	Ensure power supply is ON and has the correct voltage.
	Wall fuse/circuit breaker is blown/tripped.	Ensure adequate circuit size; install inlet restrictor, replace weak breaker.
	Incorrectly wired motor connection.	Rewire or call certified service technician or electrician.
	On-board circuit breaker is tripped.	Allow motor to cool, improve ventilation, press reset button.
	Wiring is open/has high resistance.	Check for broken wires or poor connections, repair, as necessary.
	Faulty power switch.	Replace switch.
	Motor is at fault.	Test/repair/replace.
Excessive vibration or noise during operation.	Loose component.	Inspect and tighten all bolts/nuts.
	Loose or broken motor mount.	Tighten or replace as needed.
	Motor fan hitting fan cover.	

M Flux 5 Wet Metal Dust Collector Owner's Manual

	<p>Bad motor bearings.</p>	<p>Check fan and cover; replace as needed.</p> <p>Rotate shaft manually, check for grinding or loose shaft, replace bearings if needed.</p>
<p>Loud, repetitive noise, or excessive vibration coming from cyclone</p>	<p>Machine is on uneven surface.</p> <p>Damaged/Unbalanced impeller.</p> <p>Loose connections.</p> <p>Impeller is loose.</p> <p>Motor fan hitting fan cover.</p>	<p>Stabilize on a flat surface.</p> <p>Inspect impeller for dents, bends, loose fins. Replace if needed.</p> <p>Check and re-tighten all fasteners.</p> <p>Replace the motor and impeller.</p> <p>Check fan and cover; replace as needed.</p>

14.0 Warranties

No Modifications Allowed or Sold

Laguna Tools, Inc. is not responsible for additional tools or modifications sold or performed (other than from/by Laguna Tools, Inc.) on any Laguna Tools, Inc. woodworking and/or metalworking machine. Warranty may be voided upon the addition of such described tools and/or modifications, determined on a case-by-case basis. Software purchased through Laguna Tools, Inc., is not covered under this warranty and all technical support must be managed through the software provider. Normal user alignment, adjustment, tuning, and machine settings are not covered by this warranty. It is the responsibility of the user to understand basic woodworking and/or metalworking machinery settings and procedures and to properly maintain the equipment in accordance with the standards provided by the manufacturer.

Parts under warranty are shipped at Laguna Tools, Inc.'s cost either by common carrier, FEDEX ground service, or a similar method. Technical support to install replacement parts is primarily provided by phone, fax, e-mail or Laguna Tools Customer Support Website. The labor required to install replacement parts is the responsibility of the user. Laguna Tools is not responsible for damage or loss caused by a freight company or other circumstances not in our control. All claims for loss or damaged goods must be notified to Laguna Tools within twenty-four (24) hours of delivery.

Please contact our Customer Service Department for more information. Only NEW machines sold to the original owner are covered by this warranty.

For warranty repair information, call 1-800-332-4094.

Warning: No portion of these materials may be reproduced without written approval from Laguna Tools, Inc.

Copyright 2023 Laguna Tools, Inc.

Laguna Tools Warranty

WARRANTY & REGISTRATION

THANK YOU!

Welcome to the Laguna Tools® group of discriminating woodworkers. We understand that you have a choice of where to purchase your machines and appreciate the confidence you have in the Laguna Tools® brand.

Through hands-on experience, Laguna Tools® is constantly working hard to make innovative, precision products. Products that inspire you to create works of art, are a joy to operate, and encourage your best work.

Laguna Tools®
Imagination, Innovation, and Invention at Work

WARRANTY & REGISTRATION

Every product sold is warranted to be free of manufacturers' defective workmanship, parts, and materials. For any questions about this product, the intended use or what it was designed for, customer service, or replacement parts, please contact our customer service department:

Laguna Tools® Customer Service
744 Refuge Way, Grand Prairie, Texas 75050, USA
1-800-234-1976
customerservice@lagunatools.com
www.lagunatools.com/why/customer-service/
8AM to 5PM PST, Monday through Friday

For warranty claims or to report damage upon receiving – please reach out to our warranty department:

Laguna Tools® Warranty Service
744 Refuge Way, Grand Prairie, Texas 75050, USA
1-800-332-4049
customerservice@lagunatools.com
www.lagunatools.com/policies/warranty
8AM to 5PM PST, Monday through Friday

REGISTRATION

To prevent voiding this warranty, all products sold must be registered within thirty (30) days of receiving the product. Registering the product will enable the original purchaser to receive notifications about important product changes, receive customer service, and be able to file a warranty claim against defective workmanship, parts, or materials.



WHO IS COVERED

The applicable warranty covers only the initial purchaser of the product from the date of receiving the product. To file such claims, the original purchaser must present the original receipt as proof of purchase.

WHAT IS COVERED

The warranty covers any defects in the workmanship of all parts and materials that make up the machine unless otherwise specified. Any part, determined by Laguna Tools®, to have a defect will be repaired or replaced (and shipped), without charge. The defective item/part must be returned to Laguna Tools® with the complaint and proof of purchase in the original packaging that it was received in. In the event the item/part is determined to be not covered by this warranty, the customer will be responsible for the cost to replace the item/part and all related shipping charges.

WARRANTY LIMITATIONS

This limited warranty does not apply to natural disasters, acts of terrorism, normal wear and tear, product failure due to lack of maintenance or cleaning, damage caused by accident, neglect, or lack-of inadequate dust collection. The warranty may be voided against proof of misuse/abuse, damage caused where repair or alterations have been made or attempted by others, using the product for purposes other than those described as intended use (unless with consent by Laguna Tools®), modification to the product, or use with an accessory that was not designed for the product. It is the responsibility of the user to understand basic woodworking machinery settings and procedures and to properly maintain the equipment in accordance with the standards provided in this manual.

LENGTH OF WARRANTY

All new machines and optional accessories sold through an authorized dealer carry a two-year warranty effective the date of receiving the product. Machines sold for either commercial or industrial use have a one-year warranty. Wearable parts like throat plates, bandsaw guides, etc., have a ninety-day warranty.

Table A-1 Warranty Lengths

2 Year – New Machines Sold Through an Authorized Dealer
2 Year – Accessories Sold as Machine Options (excluding blades)
1 Year – Machines Sold for Commercial or Industrial Use
1 Year – Blades and Accessories outside of Machine Options
90 Days – Wearable Parts

Aside from being free of defects upon receiving, consumable parts, like cutters and abrasives, are not covered by this warranty unless otherwise stated by Laguna Tools®. These parts are designed to be used at the expense of the operator and are available for replacement or inventory purchase. The determination of a consumable part will be made on a case-by-case basis by Laguna Tools®.

SHIPPING DAMAGE

Laguna Tools® is not responsible for damage or loss caused by a freight company or other circumstances not in the direct control of Laguna Tools®. All shipping-related claims for loss or damage goods must be made to Laguna Tools within twenty-four hours of delivery.

HOW TO RECEIVE SUPPORT

To file a warranty-claim please contact the warranty department at 1-800-234-1976. To receive customer service or technical support please contact the customer service department at 1-800-332-4049. Parts, under warranty, are shipped at the expense of Laguna Tools® either by common carrier, FedEx ground services or similar method. Technical support to install replacement parts is primarily provided by phone, fax, email, or the Laguna Tools Customer Support Website.



© 03/2018, Laguna Tools, Inc.

LAGUNA

Laguna Tools, Inc.

744 Refuge Way

Grand Prairie, TX 75050

1-800-234-1976

www.lagunatools.com

Copyright © 2023 Laguna Tools, Inc. All rights reserved.